

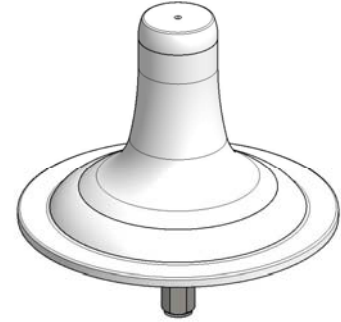
# TRS Omni Antenna

806~866 MHz / 02 dBi


## TRS-IDT-02

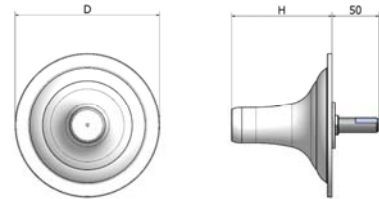
### i. Electrical Specification

|                     |            |                 |
|---------------------|------------|-----------------|
| Frequency Range     | 806~866MHz |                 |
| Polarization        | Vertical   |                 |
| Band Width          | 60 MHz     |                 |
| Gain                | ≥ 2 dBi    |                 |
| Beam width          | Horizontal | ≥ Nominal 360 ° |
|                     | Vertical   | -               |
| F-B ratio           | -          |                 |
| VSWR                | ≤ 1 : 1.5  |                 |
| Impedance           | 50 Ω       |                 |
| IMD (2x20W)         | -          |                 |
| Maximum input power | 20 W       |                 |

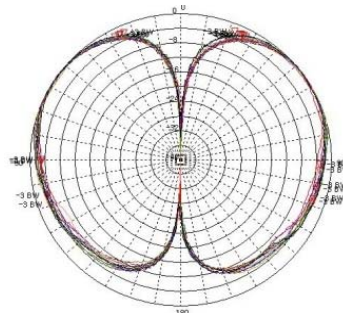


### ii. Mechanical Specification

|                                |   |
|--------------------------------|---|
| Radome Dimension ( D x H )     | Ø175 × 115 mm   |
| Weight                         | 360 g   |
| Connector Type                 | N-J (Female)  |
| Withstand Wind Pressure        | 60 m/sec  |
| Radome Material                | ABS   |
| Radome Color                   | <br>Cool Gray 1C |
| Temperature                    | -40 °C ~ 70 °C  |
| Packing Size (H x W x D) 50SET | -   |
| Packing Weight 50SET           | -   |



### iii. Radiation Pattern



Vertical Pattern